



MONTHLY MEMBERSHIP PROGRESS REPORT

District 22 C

Results as of: 05/31/2018

GMT: MAHESH CHITNIS

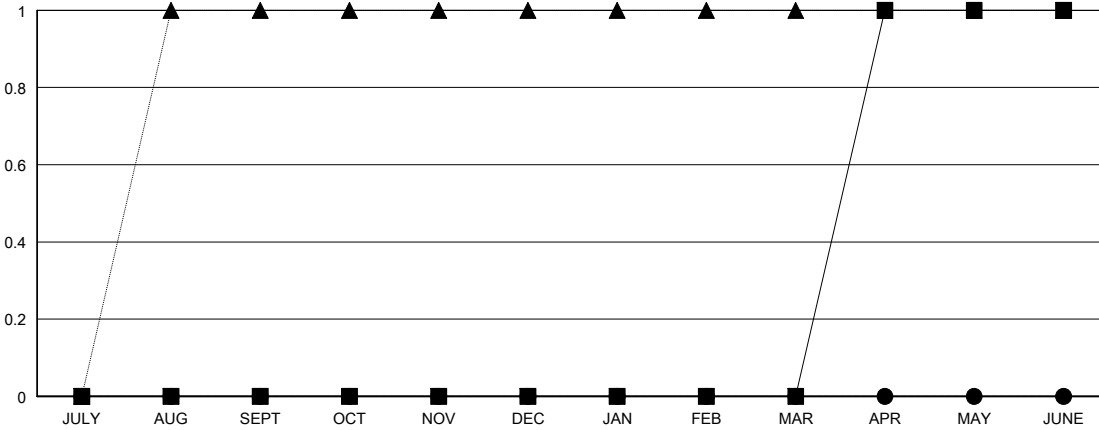
LOCATION MARYLAND

GMT CA

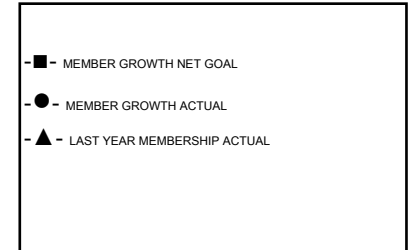
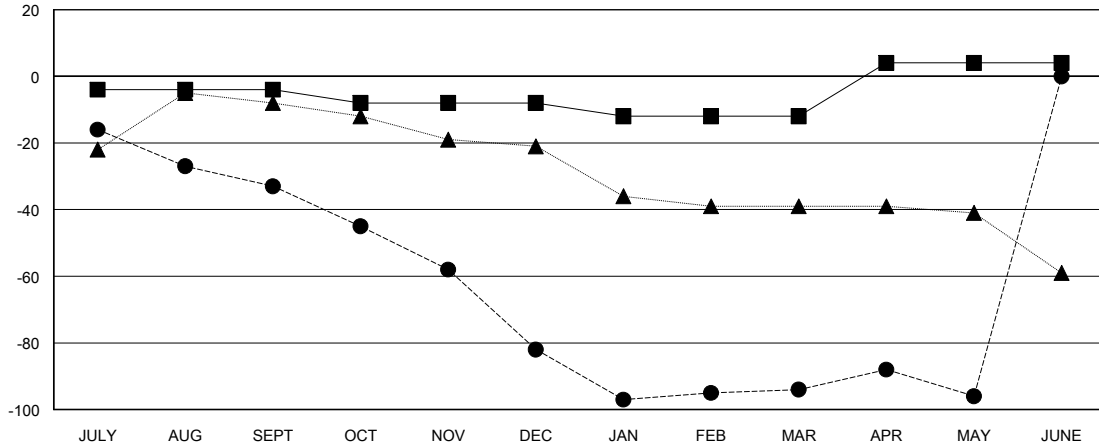
Clubs			
RESULTS FOR 2017-2018			
QUARTER	NEW CLUB GOAL	NEW CLUBS	DROPPED CLUBS
JULY/AUG/SEPT	0	0	0
OCT/NOV/DEC	0	0	1
JAN/FEB/MAR	0	0	1
APR/MAY/JUNE	1	0	0

Members			
RESULTS FOR 2017-2018			
QUARTER	MEMBER GROWTH NET GOAL	MEMBER GROWTH ACTUAL	DROPPED MEMBERS ACTUAL (including transfers)
JULY/AUG/SEPT	-4	18	50
OCT/NOV/DEC	-4	25	71
JAN/FEB/MAR	-4	18	30
APR/MAY/JUNE	16	17	19

GOALS AND ACTUAL NEW CLUBS CUMULATIVE



GOALS AND ACTUAL MEMBERS CUMULATIVE



DROPPED CLUBS: 2

28 CLUBS OF 48 ADDED 1 OR MORE NEW MEMBERS

GENDER DISTRIBUTION	
MALE	901 (68.10%)
FEMALE	422 (31.90%)
Women Percentage Fiscal Year Goal: 35%	

DROPPED MEMBERS	
DECEASED	24
CLUB CANCELLED	8
OTHER	138
TOTAL	170

[CLICK HERE FOR CUMULATIVE MEMBERSHIP DATA](#)

TOTAL FAMILY UNIT MEMBERS	204
FAMILY MEMBERS PAYING HALF DUES	109